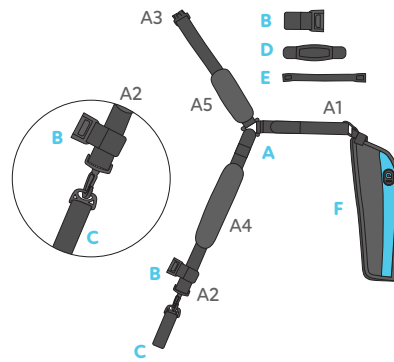


For single patient use only. Do not make any alterations to the product unless specified in these instructions. It is critical that you do not overtighten. If straps need shortening, only remove the amount of strap needed to fit the patient. For Air Abductions: **Do not over-inflate**. If using therapy ball, always make sure valve is shut off so the Air Abduction bladder does not continue to inflate. Images for reference only, always follow your physician's instructions when applying and wearing Align206 braces, slings and abductions.

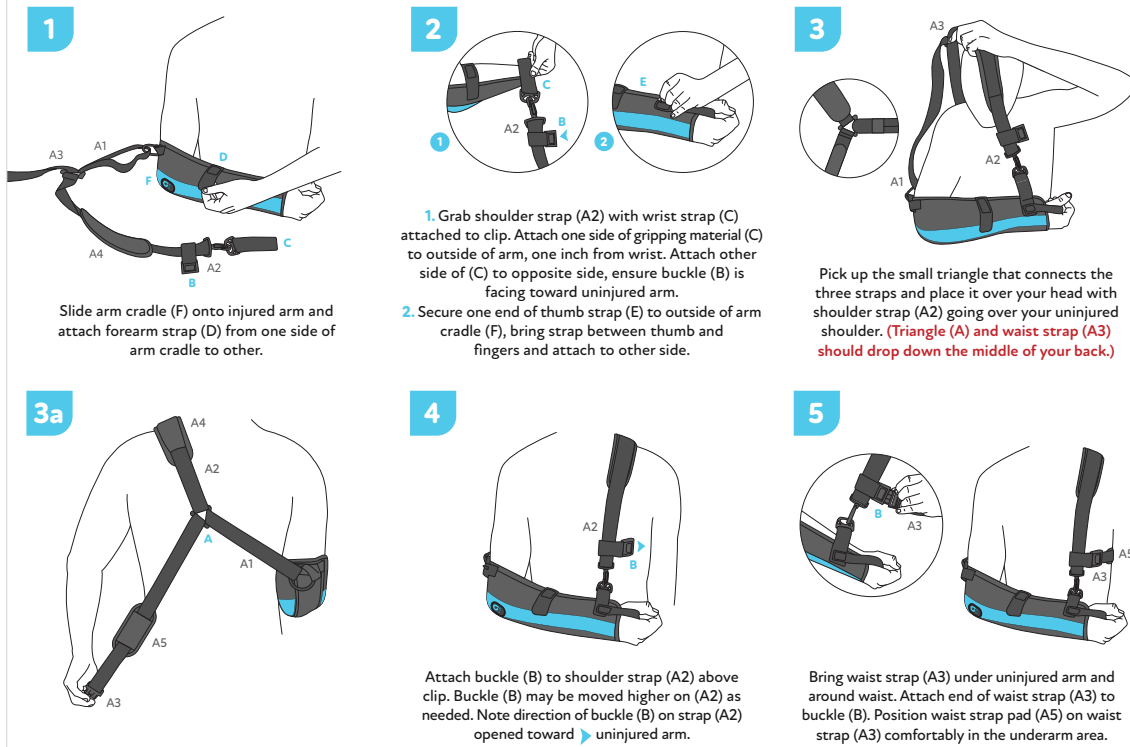
- A. Shoulder Sling Straps
- B. Buckle
- C. Wrist Strap
- D. Forearm Strap
- E. Thumb Strap
- F. Arm Cradle



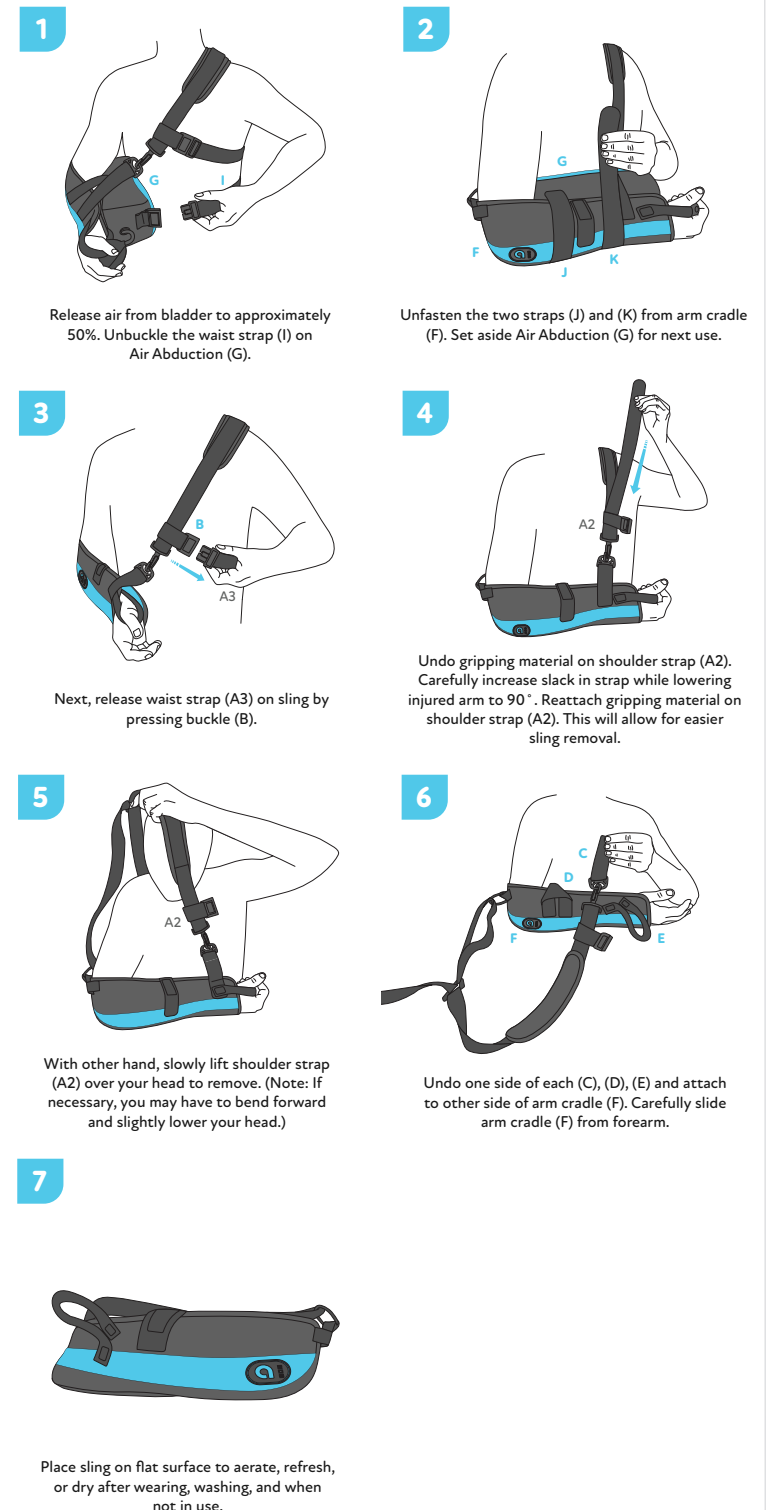
- G. Air Abduction
- H. Air Pump/Therapy Ball
- I. Waist Strap
- J. Abduction Arm Strap
- K. Abduction Arm Strap

I-70 SHOULDER SLING: BREATHABLE APPLICATION (First Time Setup)

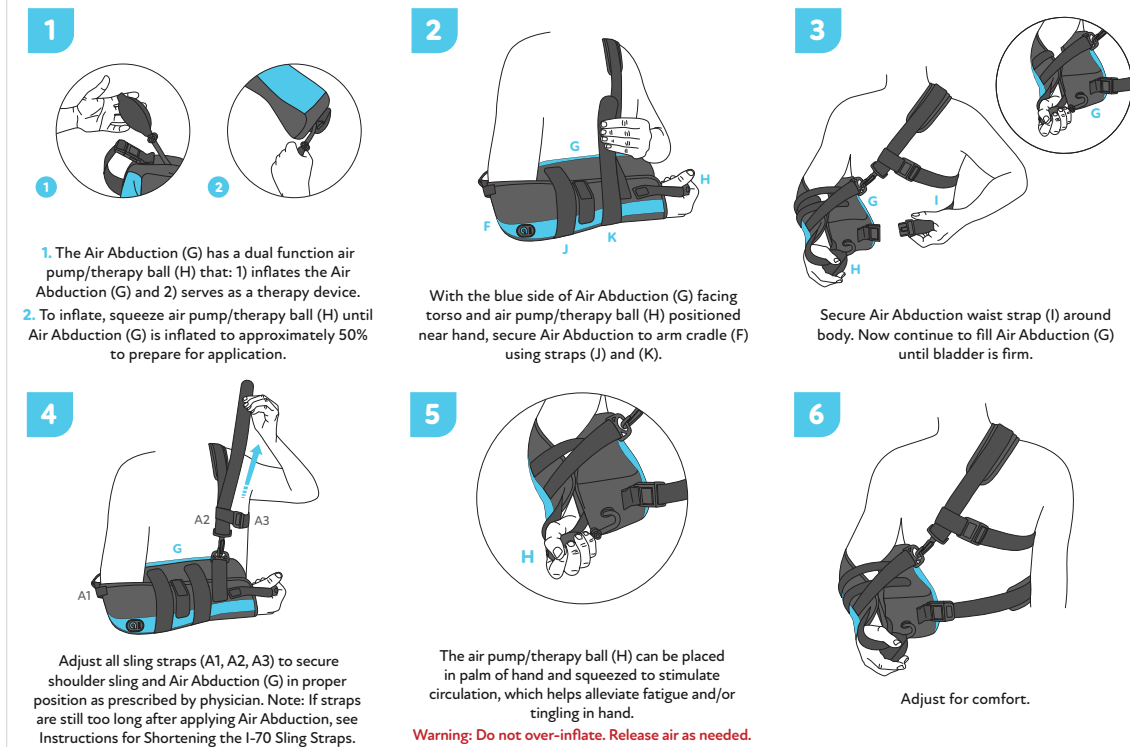
Assistance required for best fit. Injured shoulder should remain stationary throughout the application process.



I-44+ AIR ABDUCTION AND I-70 SLING REMOVAL



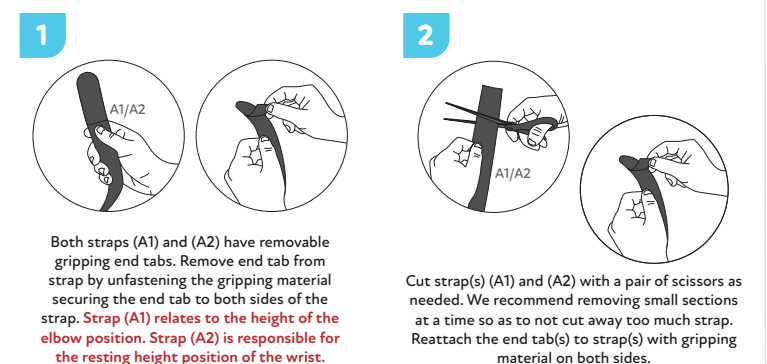
I-44+ AIR ABDUCTION APPLICATION (First Time Setup)



REAPPLICATION AFTER USE OR CLEANING

For Air Abduction + Sling reapplication, refer to steps 1-5 under Sling Application and Air Abduction Application. For straps: Wrap buckle strap (B) around strap (A2) above clip with (B) opening toward uninjured arm. Insert strap (A1) through loop in arm cradle (F), feeding from the inside to outer side of arm cradle.

INSTRUCTIONS FOR SHORTENING THE I-70 SLING STRAPS (Optional)




CARE AND MAINTENANCE

Do not dry clean, iron, bleach, or use an abrasive cleaning agent, or instrument on any part of the Align206 brace, sling, abduction or accessory. **HAND WASH AND AIR DRY ONLY.**
For Air Abductions: Do not submerge air bladder or air pump/therapy ball in water. For proper functioning, ensure air hose connection to bladder is inside cover at all times.

I-70 SLING

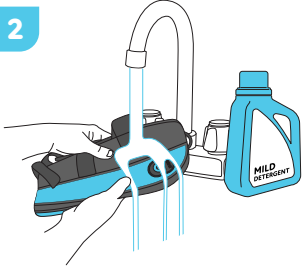
HAND WASH

1



Ensure all straps and gripping material are completely secured.

2



Hand wash the sling in cold water using a mild detergent. Rinse with clean cold water to remove all soap residue.

DRYING
AIR DRY ONLY.

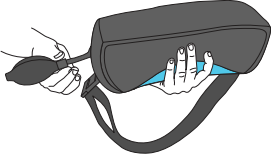


Place the sling on a flat surface. Allow to dry completely, approximately 6 to 8 hours, prior to assembly and use.

I-44+ AIR ABDUCTION

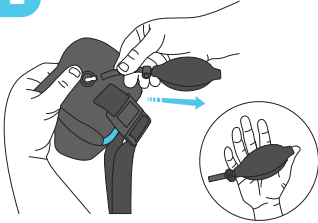
HAND WASH ONLY

1



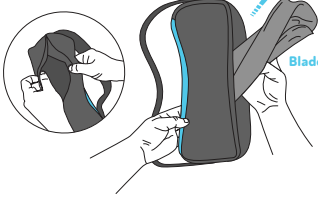
Deflate Air Abduction (G)'s bladder using release valve near air pump/therapy ball (H). Secure all and straps to cover.

2




Locate point where Air Abduction (G)'s bladder first connects to hose at opening in cover. Gently twist and pull the hose to release bladder. Set aside air-pump/therapy ball (H).

3



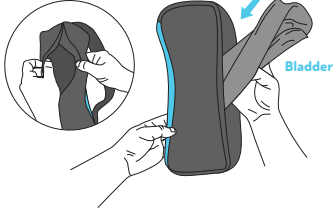
Open Air Abduction (G) bladder cover by unfastening the gripping material. Carefully remove Air Abduction (G)'s bladder and set aside. **Use damp cloth and mild detergent to clean Air Abduction bladder.**

4



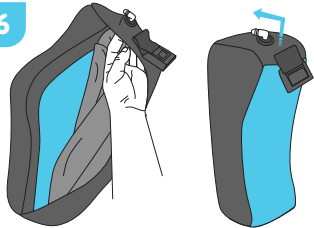
Hand wash Air Abduction cover (G) in cold water using a mild detergent. Rinse with clean cold water to remove all soap residue.

5




When completely dry, insert Air Abduction (G)'s bladder into cover.

6



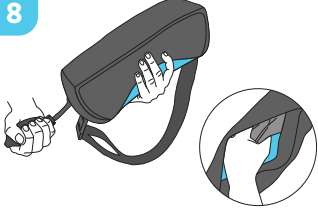
Feed hose connector through cover opening to outside of cover and rotate bladder until spout is facing toward cover opening side. This properly positions bladder to fit curved cover shape.

7



Connect the hose of the air pump/therapy ball (H) by gently twisting and pushing onto connector. Slowly press connector through opening into cover.

8



Reinflate bladder to approximately 50% using the air pump/therapy ball (H) while guiding and adjusting bladder shape to fit into cover. Fasten cover. Close Air Abduction (G) cover by fastening gripping material.



AIR ABDUCTION + SLING
RECTANGULAR
INFORMATIONAL GUIDE FOLDOUT



AIR ABDUCTION + SLING
RECTANGULAR



1419 Donelson Pike
Suite A
Nashville, TN 37217
Align206.com



All instructions and additional resources can be found at align206.com